



South Tyrol's Roadmap for the Mobility of Tomorrow

10.06.2025

The TEN-T network

- South Tyrol lies in the heart of the Alps...
- ... along the European ScanMed corridor, which connects Scandinavia with the Mediterranean Sea
- One of the most important European transport corridors



Facts and figures

0,5 million

inhabitants, 65% of whom live in rural areas

14%

of the area lower than 1.000 meter above sea level

2.300 km

Regional and state roads

115 km

Brenner motorway

11.88 million cars

drove across the Brenner Pass in 2023

36,1 million

overnight stays in 2023

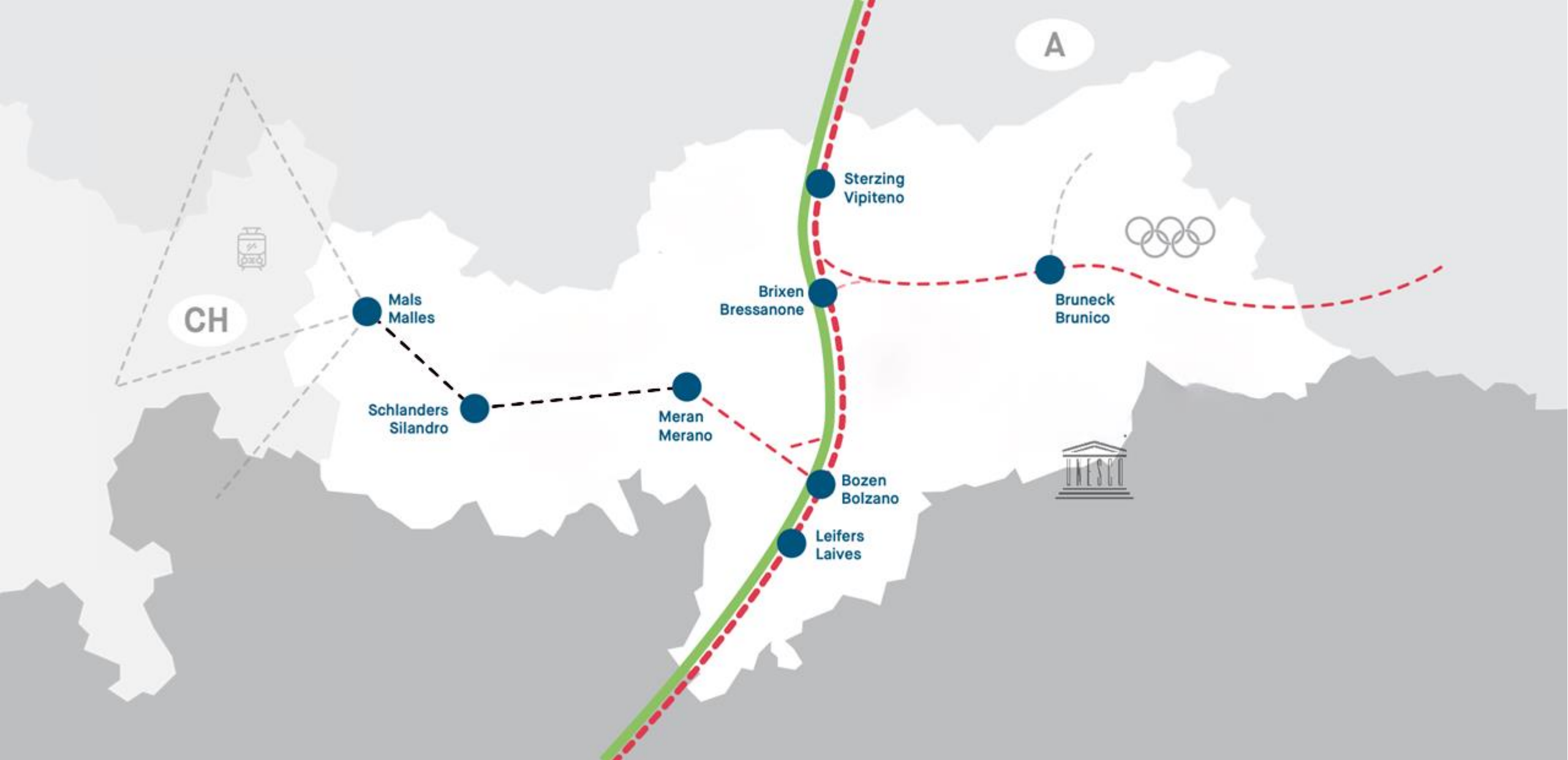


AUTONOME PROVINZ BOZEN - SÜDTIROL



PROVINCIA AUTONOMA DI BOLZANO - ALTO ADIGE

PROVINCIA AUTONOMA DE BULSAN - SÜDTIROL



AUTONOME PROVINZ BOZEN - SÜDTIROL



PROVINCIA AUTONOMA DI BOLZANO - ALTO ADIGE

PROVINZIA AUTONOMA DE BULSAN - SÜDTIROL

Strategic framework: the European Green Deal the Climate Plan and the SüdtirolPlan for the Mobility of tomorrow





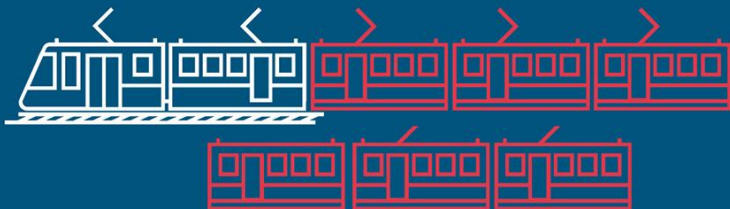
#SüdtirolPlan - #AltoadigePlan

Our roadmap for the mobility of tomorrow

-25%



+250%



+20%



+50%

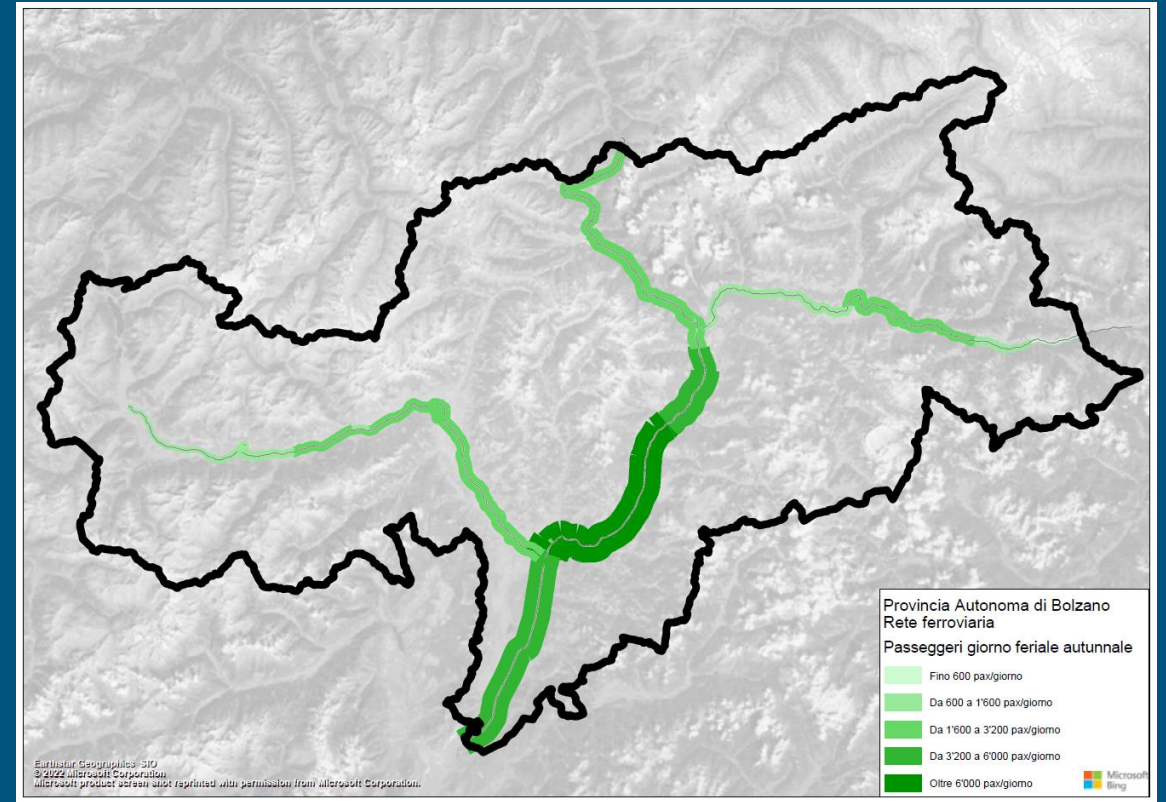
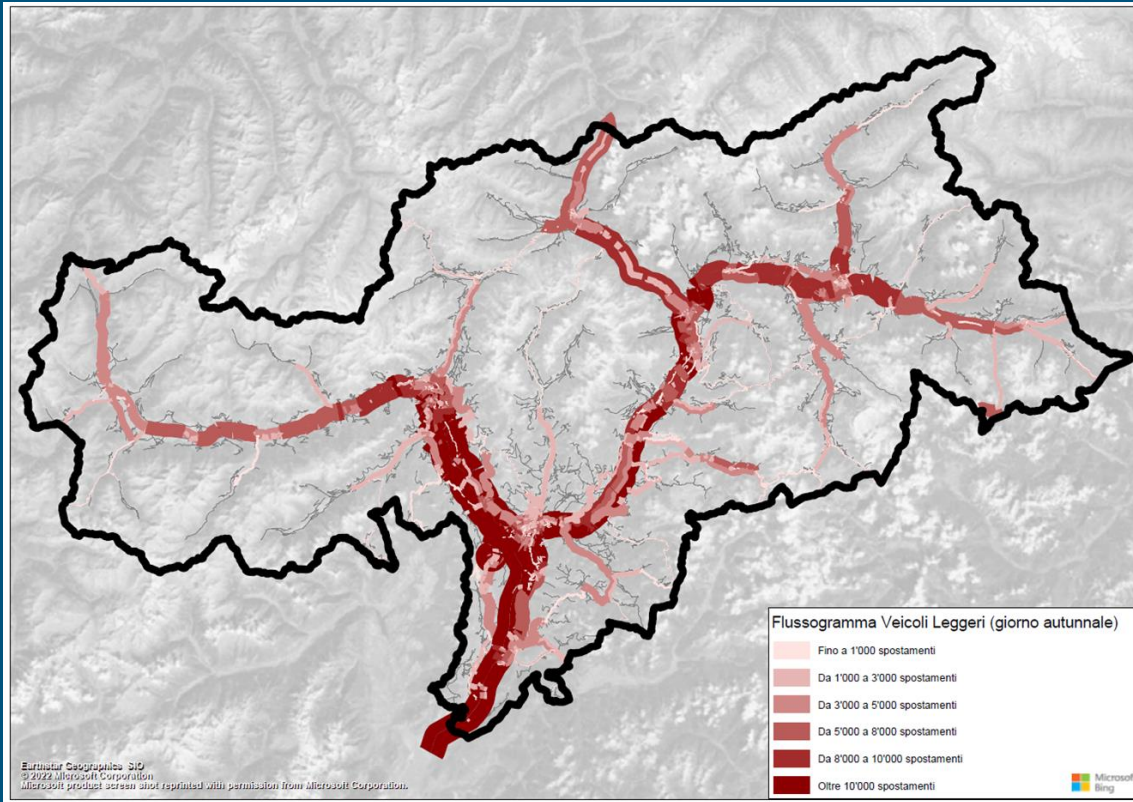


#SüdtirolPlan - #AltoadigePlan

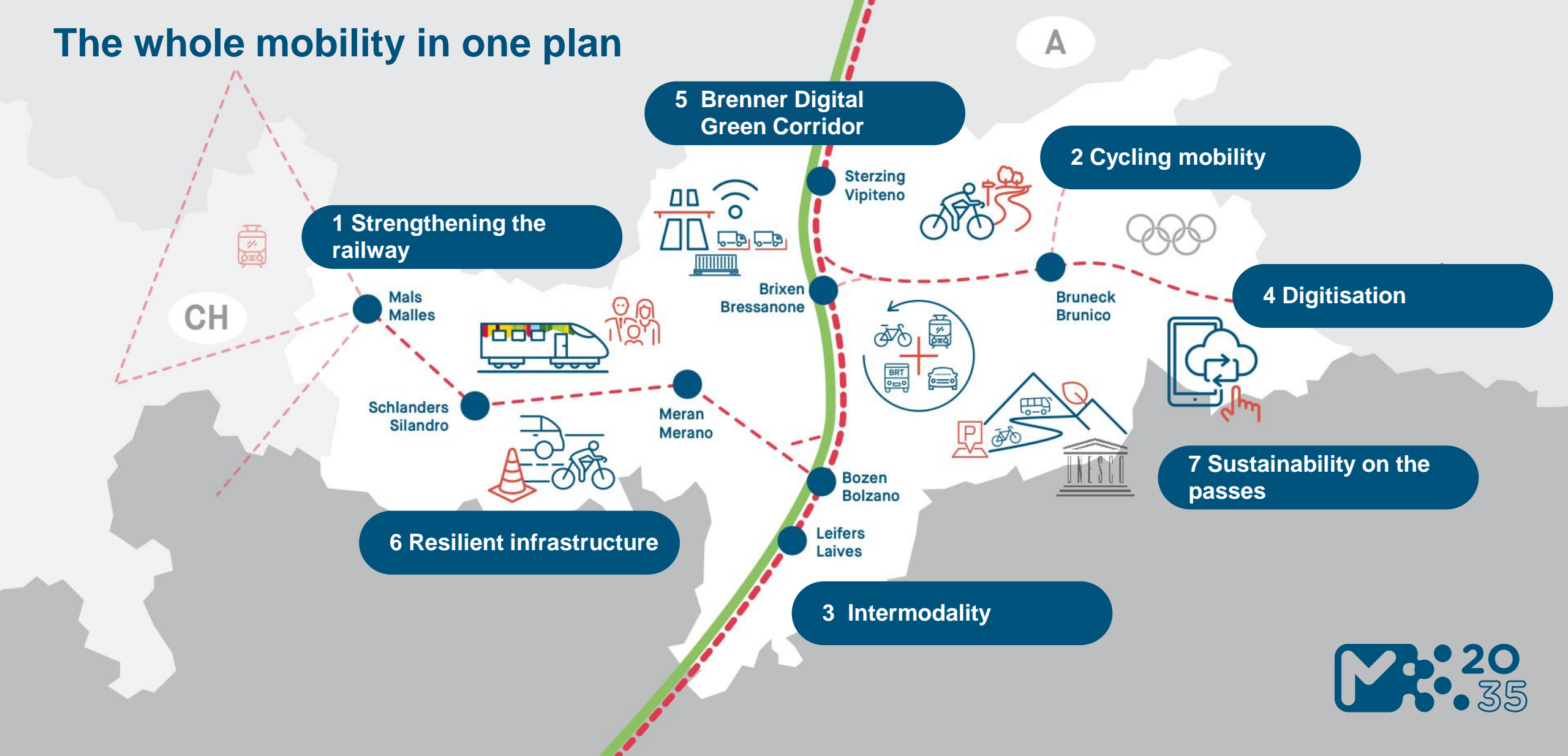
**Our goals
Unsere Ziele
I nostri obiettivi
Chisc é nüsc obietifs**



Data is essential for strategic planning!

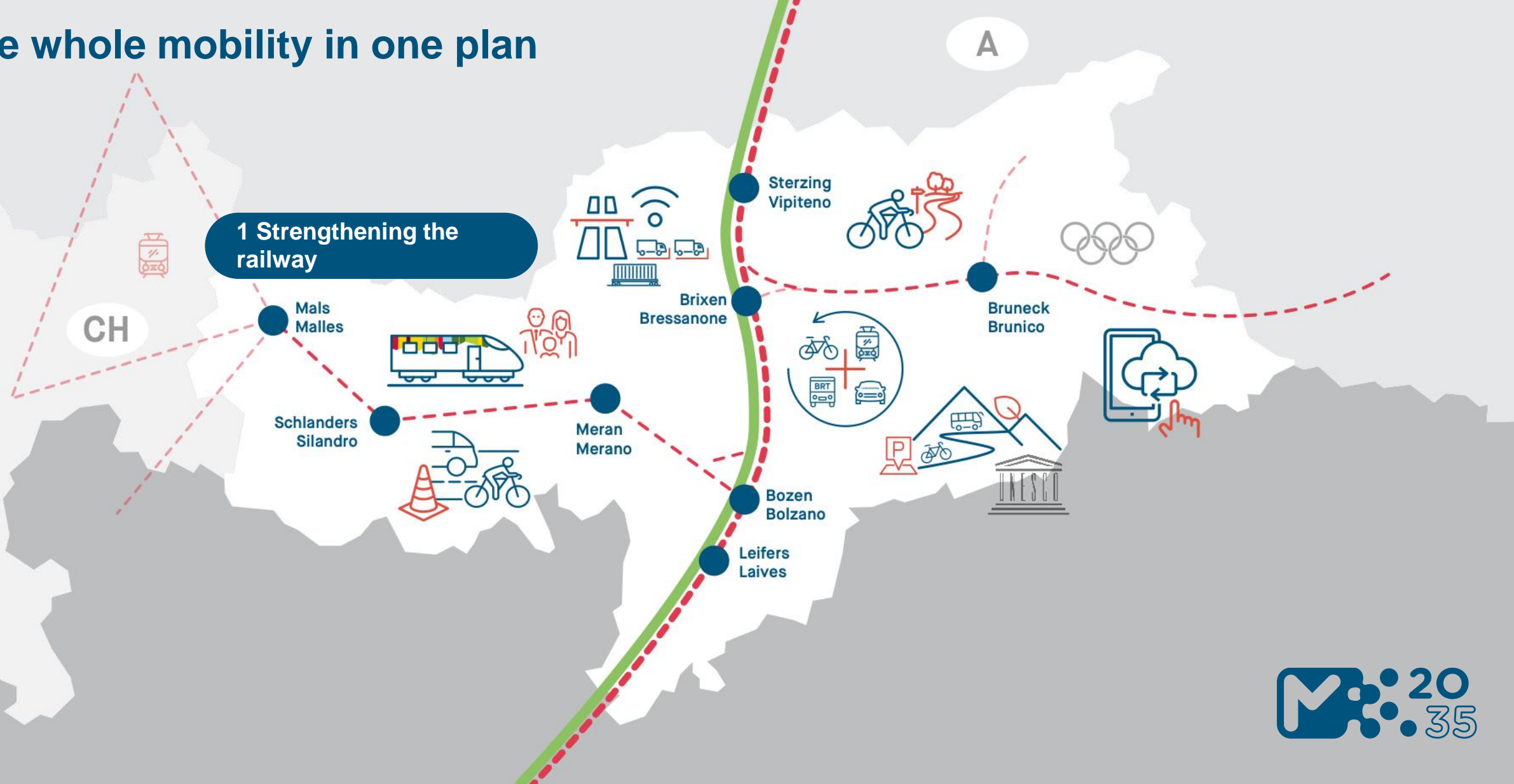


The whole mobility in one plan

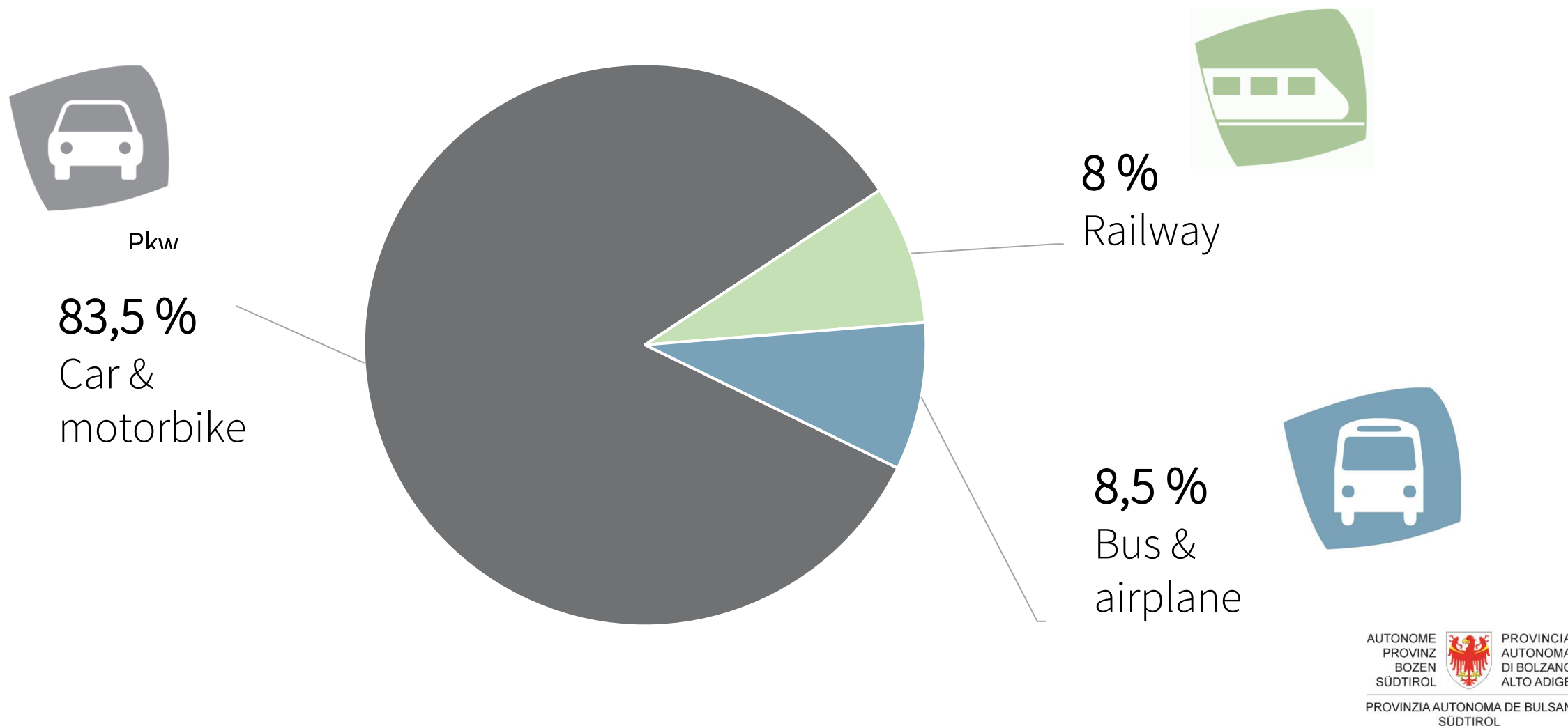


M 2035

The whole mobility in one plan



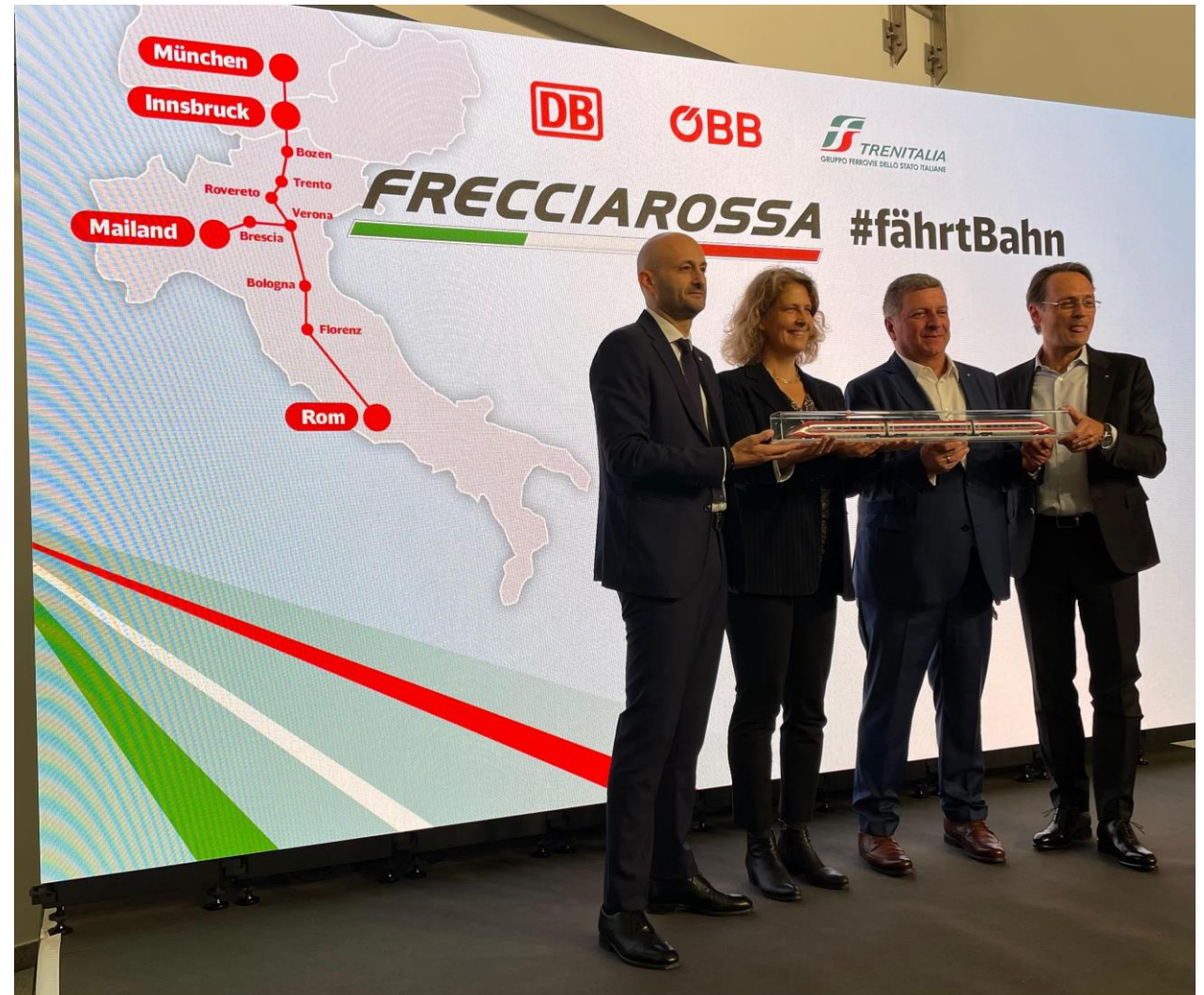
Mode of transport – Guests in South Tyrol 2023



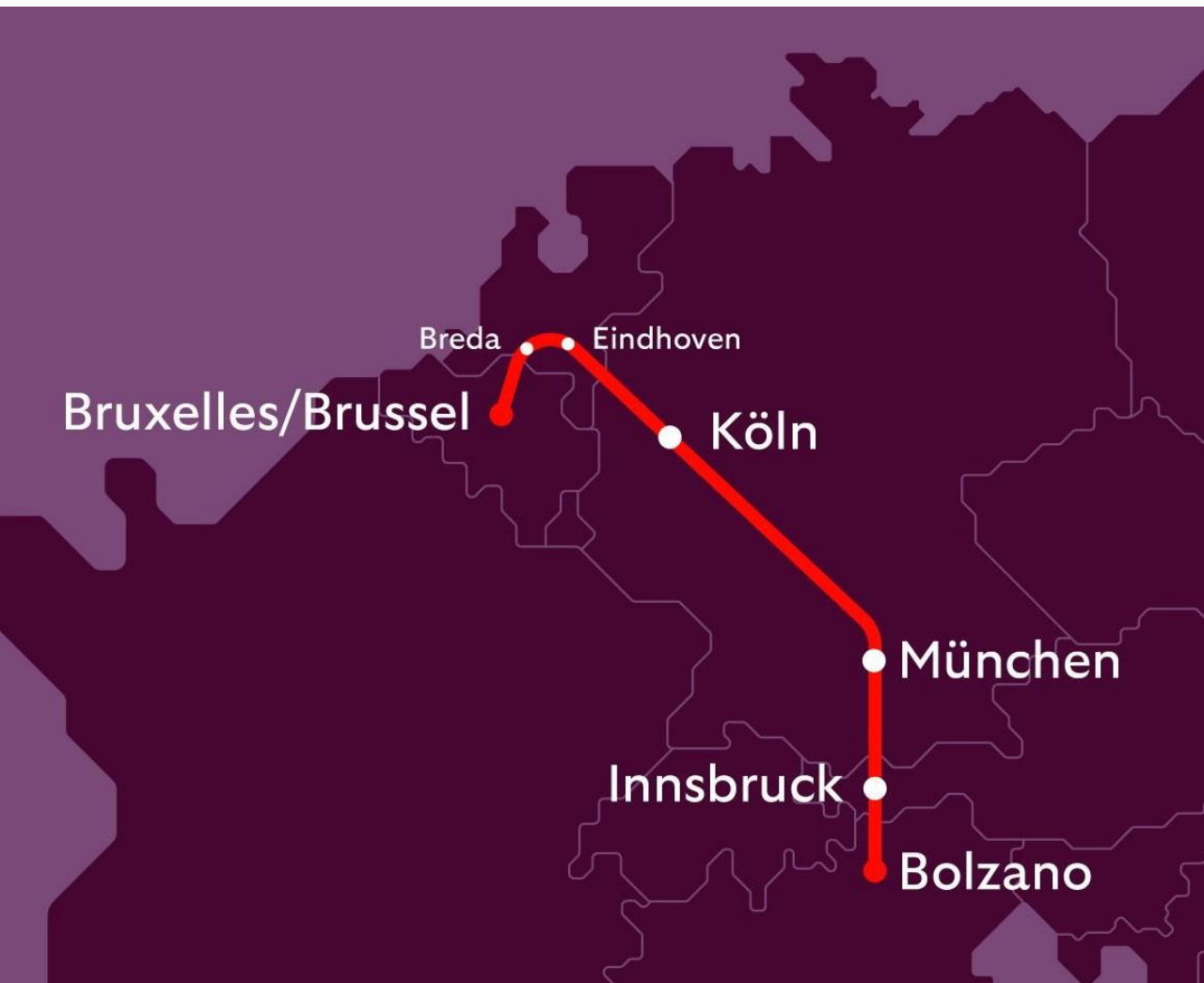
Soft measures: Improve connectivity and advertise the use of public transport



Soft measures: Improve connectivity and advertise the use of public transport



Improve connectivity and advertise the use of public transport



Bruxelles Midi/ Brussel Zuid	19:00
Breda	20:30
Eindhoven Centraal	21:30
Venlo	22:30
Köln Hbf	23:30
München	06:30
Kufstein	07:30
Wörgl	08:00
Jenbach	08:30
Innsbruck Hbf	09:00
Brennero	09:30
Bressanone	10:30
Ponte Gardena-Laion	10:45
Bolzano	11:00

Departure twice a week

Bolzano	19:00
Ponte Gardena-Laion	19:15
Bressanone	19:30
Brennero	20:30
Innsbruck Hbf	21:00
Jenbach	21:30
Wörgl	22:00
Kufstein	22:30
München	23:30
Köln Hbf	06:30
Venlo	07:30
Eindhoven Centraal	08:30
Breda	09:30
Bruxelles Midi/Brussel Zuid	11:30

Departure twice a week

Last mile transport


M:20
35

Südtirol Transfer[Prenotazione](#)[Domande frequenti](#)[Contatto](#)[Login](#)[IT](#)

Südtirol Transfer: il vostro collegamento in navetta

L'automobile va in vacanza! Volete venire in Alto Adige in autobus o in treno rispettando l'ambiente? La navetta di collegamento di Südtirol Transfer vi porta senza stress dalla stazione ferroviaria o degli autobus in oltre 9.000 alloggi in Alto Adige!

[Scopri di più](#)

**Passo 1** - Scegli collegamento


Nome dell'alloggio *

Alloggio *

Stazione dei treni/bus/aeroporto *


Stazione dei treni/bus/aeroporto *

☒ Transfer collettivo 

☐ Transfer individuale 

Transfer per l'alloggio (arrivo)

Data di arrivo 

mattina (ore 5:00 - ore 8:00) 

Transfer per la stazione/fermata (partenza)

Data di partenza 

mattina (ore 5:00 - ore 8:00) 

Reimpostare il modulo

Avanti

**Passo 2** - Numero di persone e bagaglio



Guest Pass Südtirol



Challenges with tourism

Reduce individual traffic



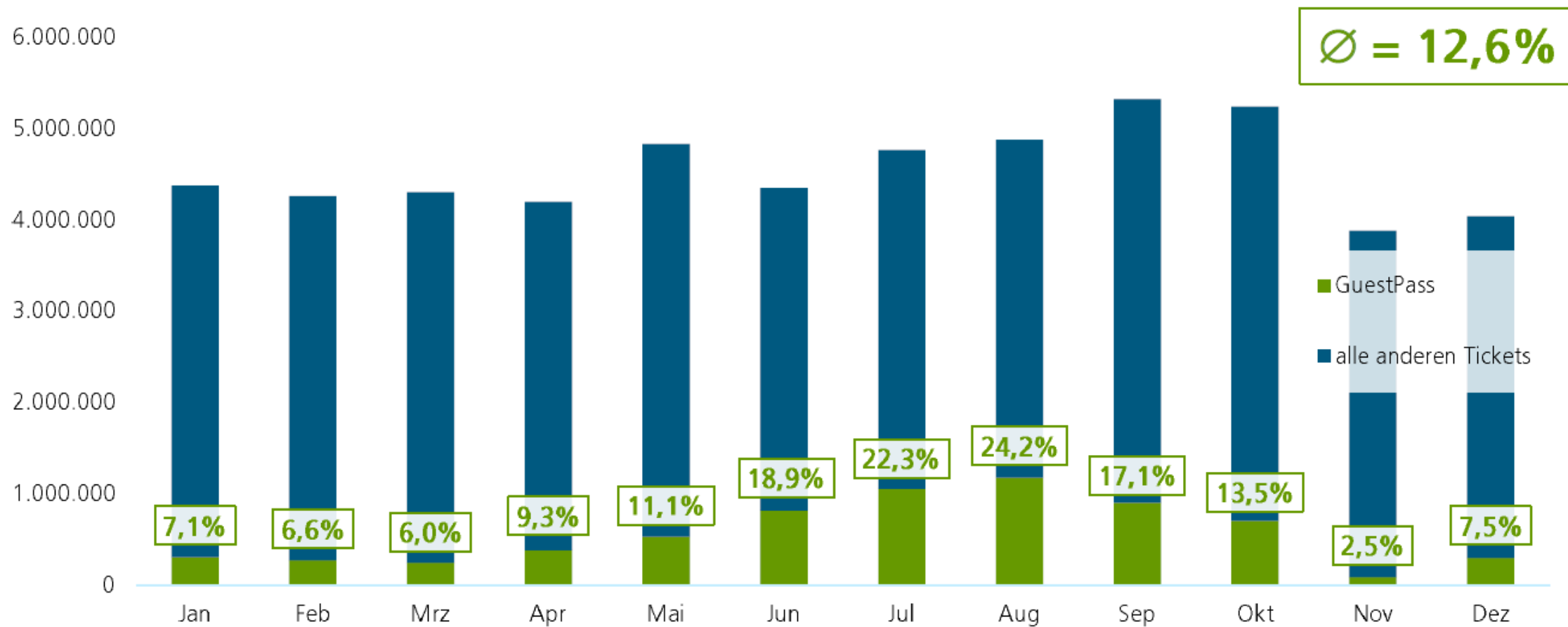
No need for ticket shops



Fast boarding

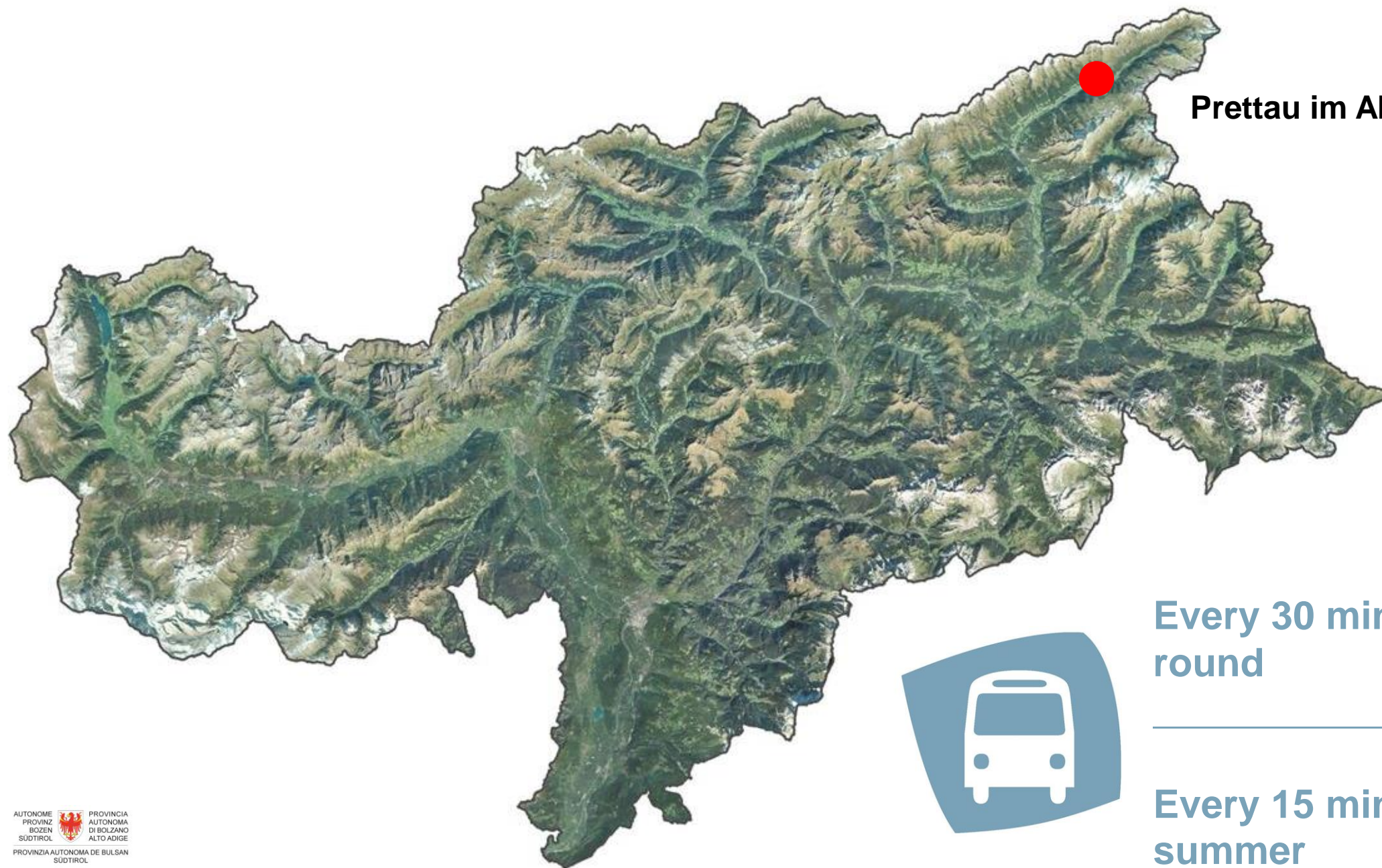


Südtirol GuestPass: Usage



Gemeinde Prettau (1475 hm, 508 inhabitants)





Prettau im Ahrntal

**Every 30 min - all year
round**

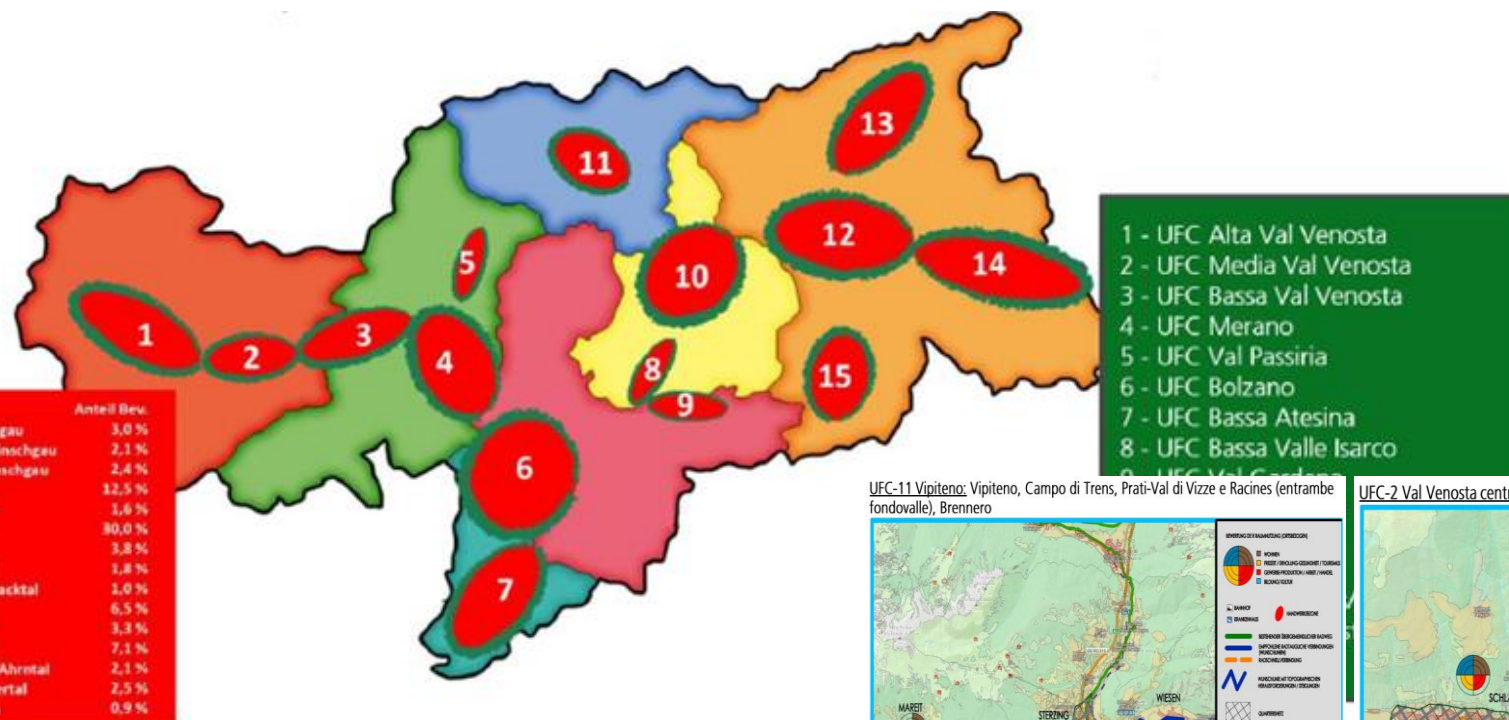
**Every 15 min – in the
summer**

A

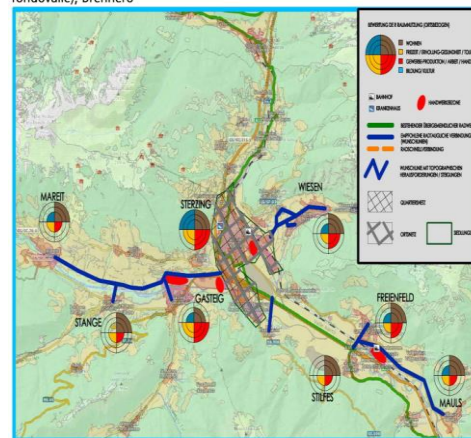


Cycle paths in South Tyrol

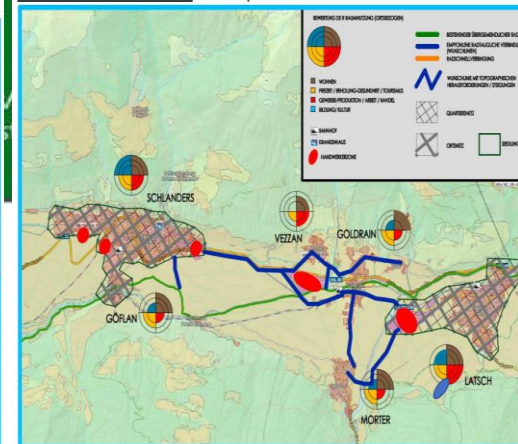
Functional areas for developing cycle paths



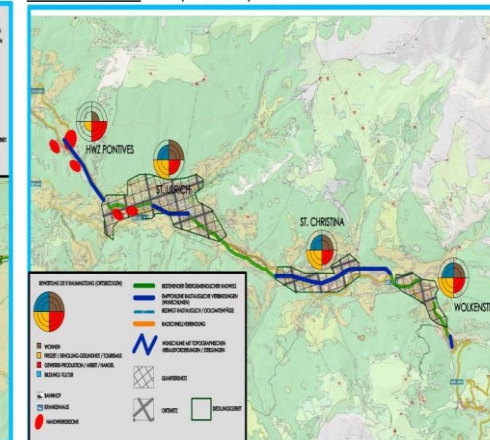
UFC-11 Vipiteno: Vipiteno, Campo di Trens, Prati-Val di Vizze e Racines (entrambe fondovalle), Brennero



UFC-2 Val Venosta centrale: Silandro, Laces



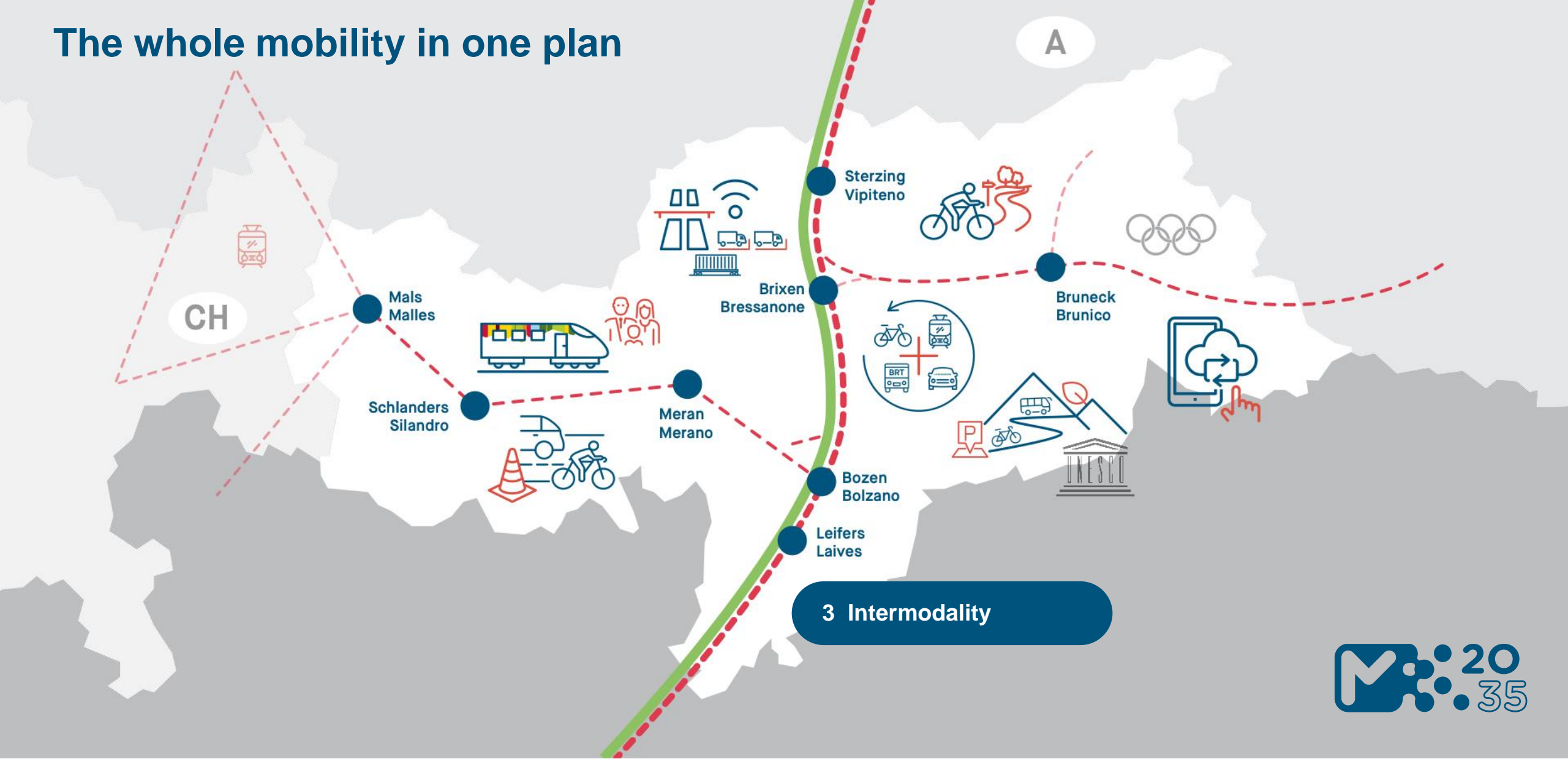
UFC-9 Val Gardena: Ortisei, S. Cristina, Selva



Challenge: bikes on public transport



The whole mobility in one plan



Intermodality



Intermodal hub St. Jakob



Park & Ride



Park&Ride



464

Ju de Börz
Würzjoch
passo delle Erbe



Fahrplan
Orario
Timetable



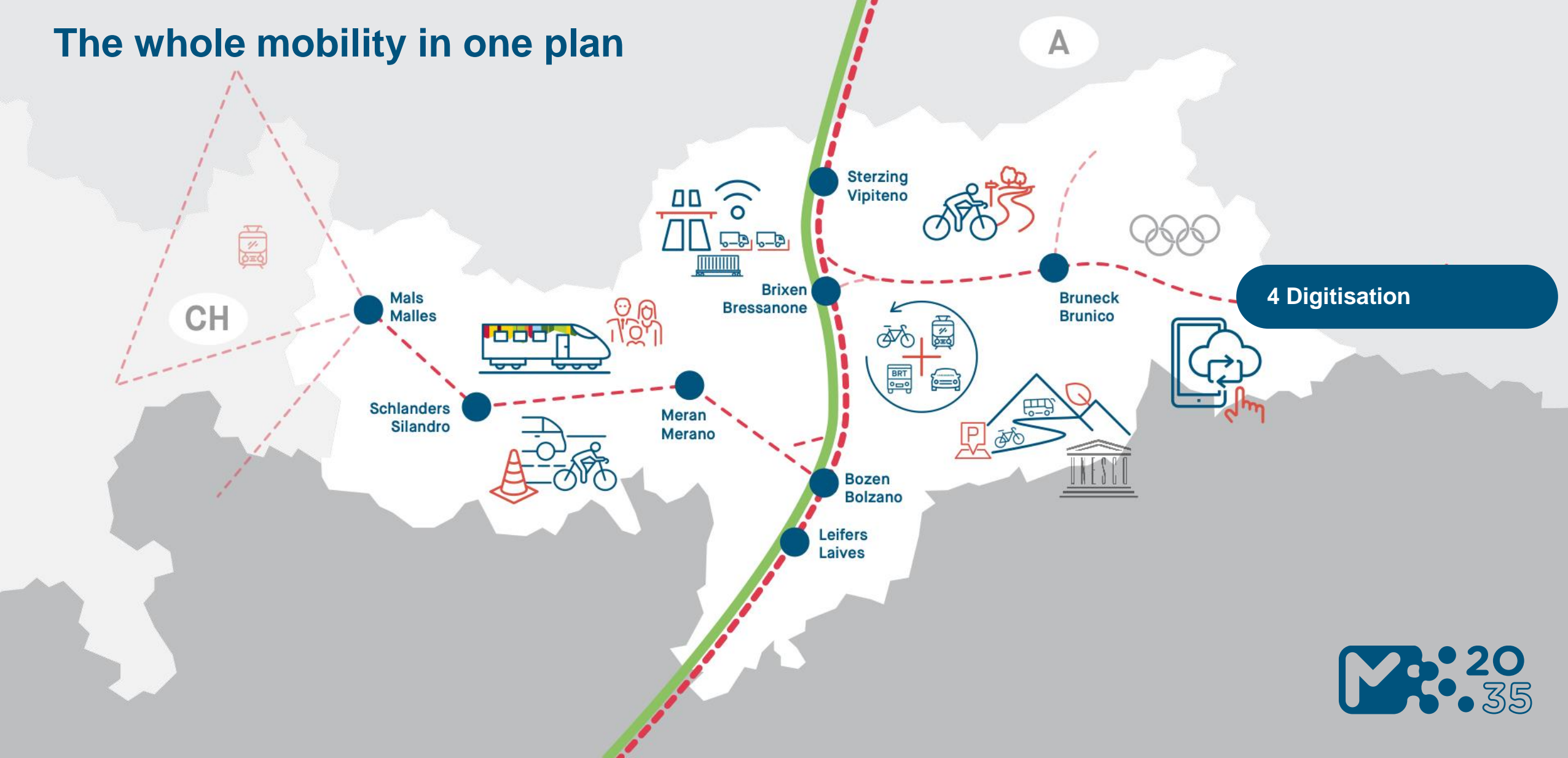
Parkplatz Würzjoch kostenpflichtig.
Begrenzte Stellplätze.

Parcheggio passo delle Erbe a
pagamento. Numero limitato di posti.

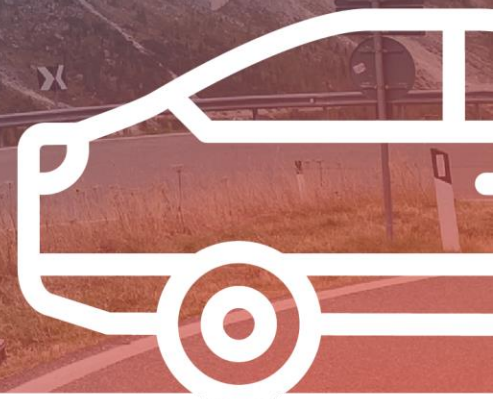
Würzjoch | passo delle Erbe parking
chargeable. Limited parking spaces.



The whole mobility in one plan



Digitisation of the roads



AUTONOME PROVINZ BOZEN - SÜDTIROL



PROVINCIA AUTONOMA DI BOLZANO - ALTO ADIGE

PROVINCIA AUTONOMA DE BULSAN - SÜDTIROL



Co-funded by
the European Union

MERIDIAN

Traffic monitoring - analysing and understanding traffic flows

ORIGINI E DESTINAZIONI
DATI TRAFFICO
NAZIONALITÀ

ANALISI AREE

PASSI DOLOMITICI
SAN LORENZO DI SEBATO
CUSTOM_BRENNERO

ACUSTICA

FERROVIE
RUMORE PASSI

PMV

PROGRAMMI PMV

VIDEOCAMERE

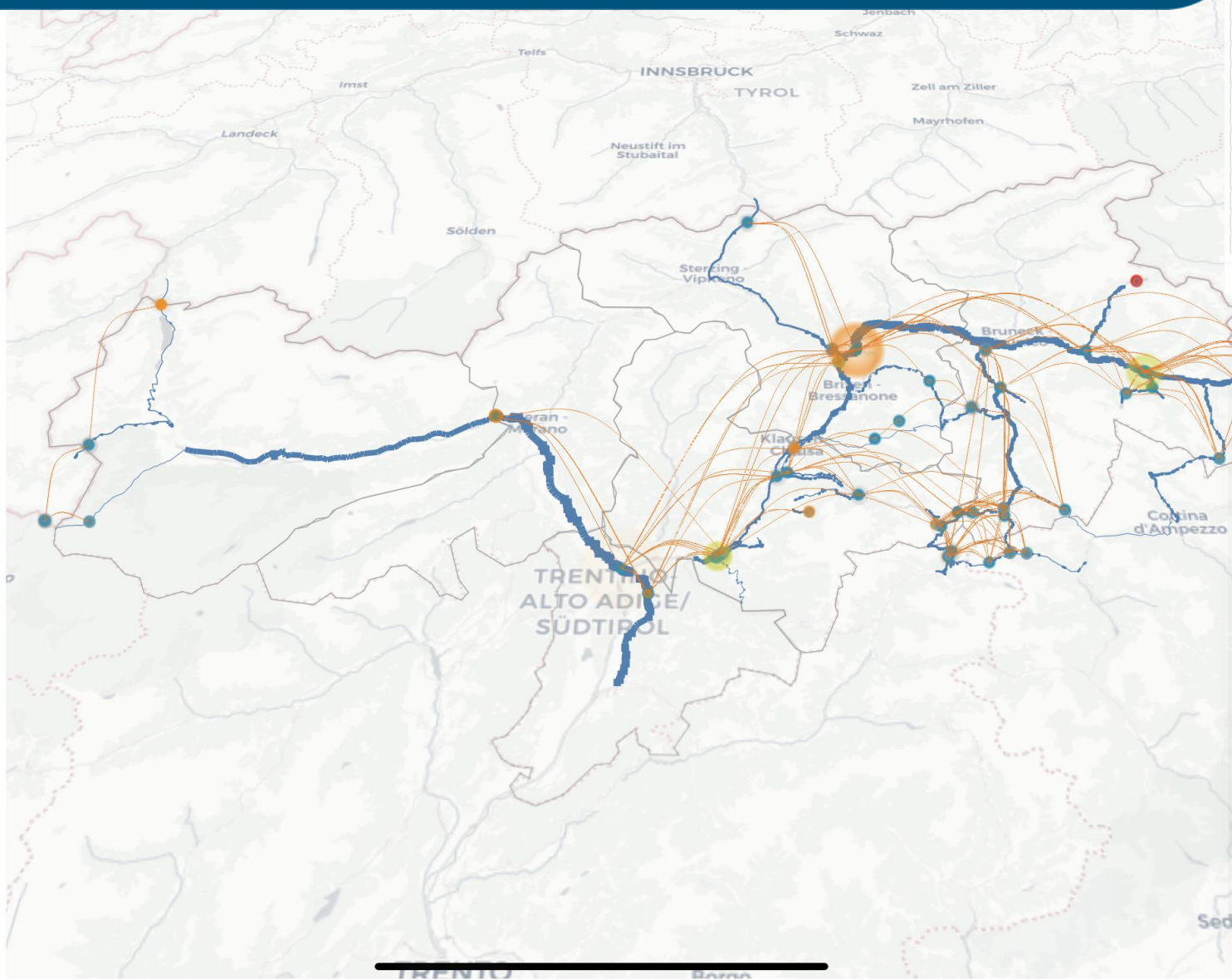
VIDEOCAMERE

RICERCA PER TARGHE

RICERCA PER TARGHE

SETTINGS

SETTINGS-USER
LOGOUT

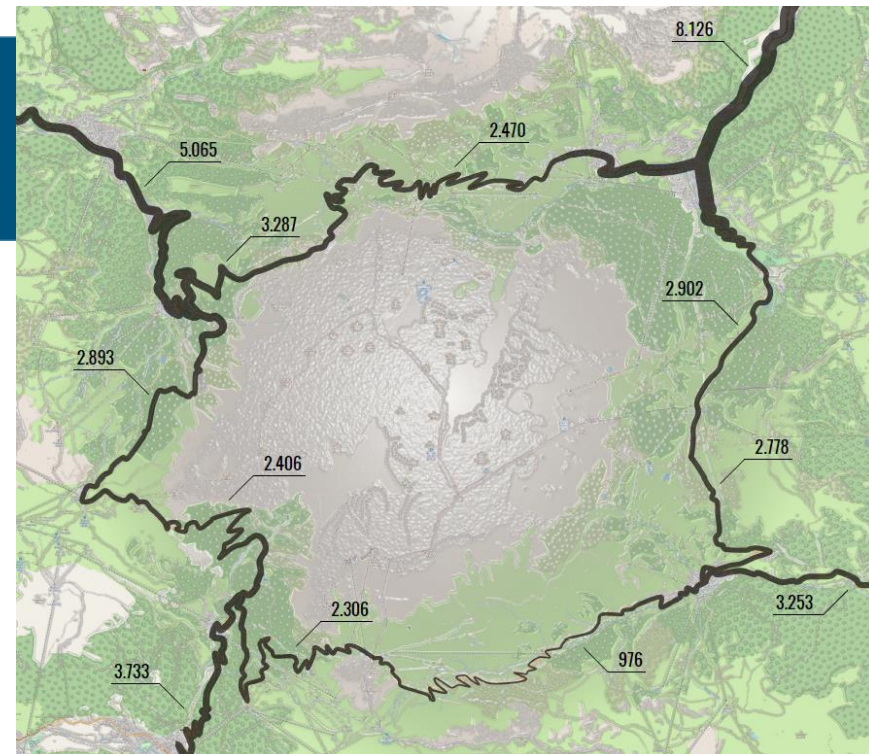
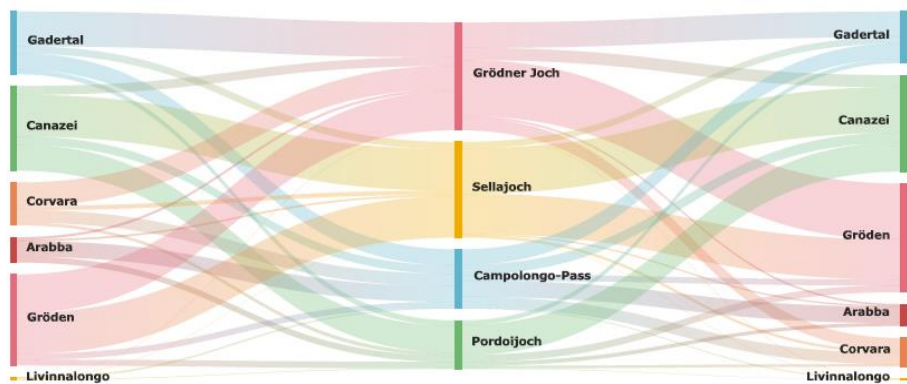


- ☒ Flussi di traffico
- ☒ O/D tempo reale
- ☒ Flussi fra nodi
- ☐ Veicoli orari
- ☒ Postazioni
- ☒ Postazioni e flussi
- ☒ Avvisi Postazioni
- ☐ Tempi di percorrenza
- ☐ Decibel
- ☐ PMV
- ☐ Telecamere
- ☐ Temperature
- ☐ Venti
- ☐ Eventi
- ☐ Controllo accessi



Traffic monitoring - analysing and understanding traffic flows

URSPRÜNGE UND ZIELE

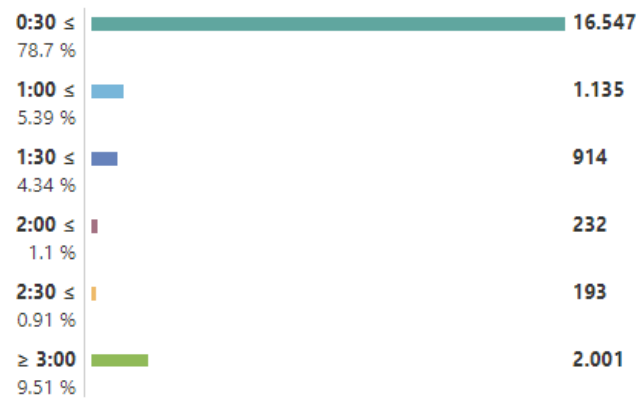


GRÖDNER JOCH

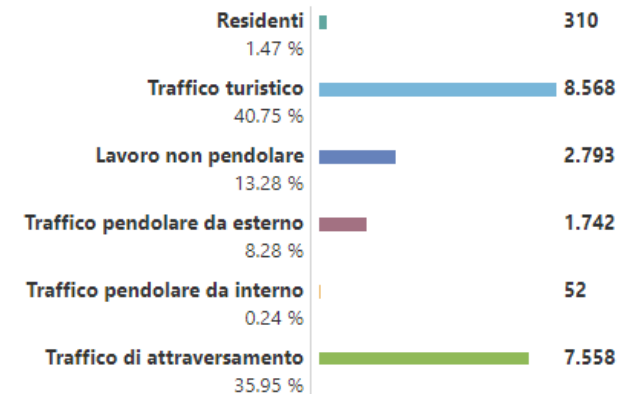
CLASSIFICAZIONE VEICOLI



TEMPI DI SOSTA



CLASSIFICAZIONE TRAFFICO



AUTONOME PROVINZ BOZEN - SÜDTIROL



PROVINCIA AUTONOMA DI BOLZANO - ALTO ADIGE

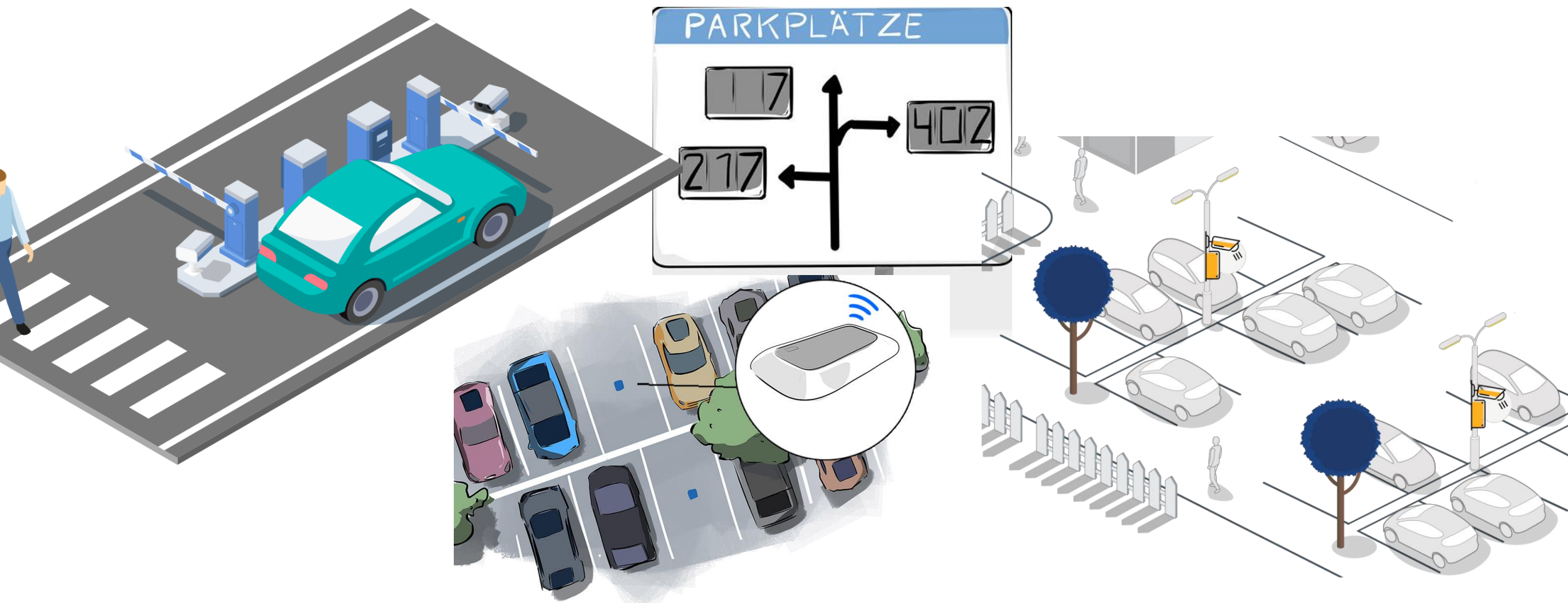
PROVINZIA AUTONOMA DE BULSAN - SÜDTIROL



Co-funded by
the European Union

MERIDIAN

Digitalisation of parking spots



Parking

Location name

Real time parkings

All parkings

Bolzano

Merano

Rovereto

Trento

708

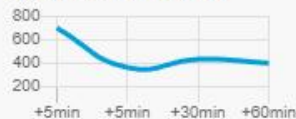
Parcheggio Fiera



Last update 11:35 13/8/24

359

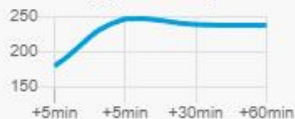
Parcheggio Centro



Last update 11:35 13/8/24

246

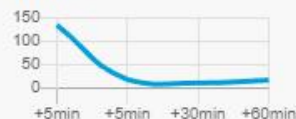
Parcheggio Palasport



Last update 11:35 13/8/24

17

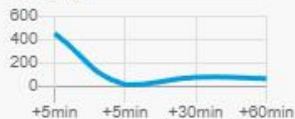
Parcheggio Luna Via Molini



Last update 11:35 13/8/24

11

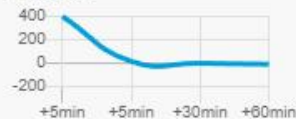
Parcheggio Central Parking



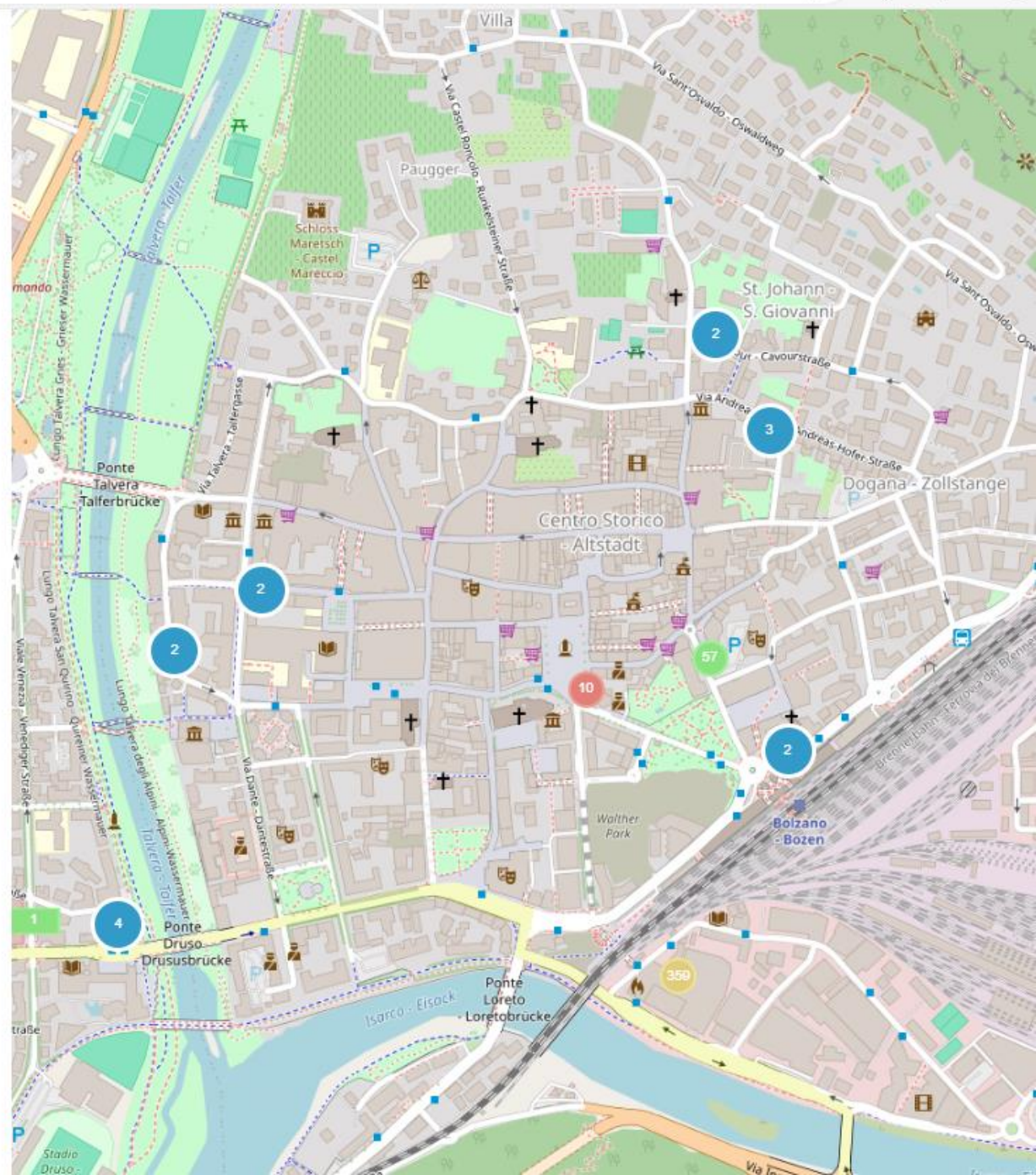
Last update 11:35 13/8/24

10

Parcheggio Piazza Walther



Last update 11:35 13/8/24



The whole mobility in one plan



Brenner Green Corridor *

Connecting Europe:
Green and Digital
Along the Brenner

* Concept first presented by South Tyrol in 2009



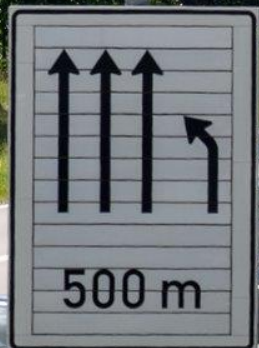
AUTONOME PROVINZ BOZEN - SÜDTIROL



PROVINCIA AUTONOMA DI BOLZANO - ALTO ADIGE

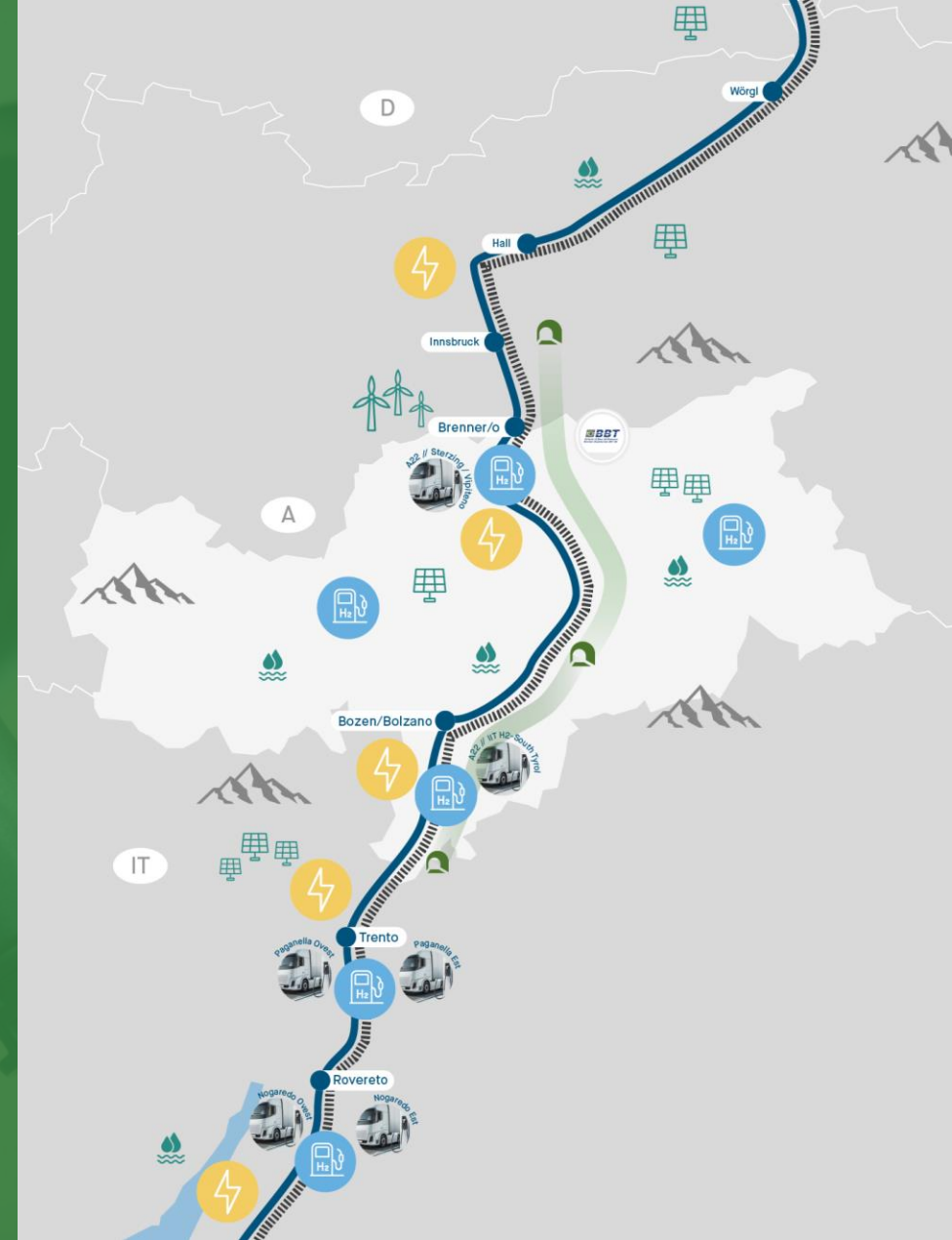
PROVINZIA AUTONOMA DE BULSAN - SÜDTIROL





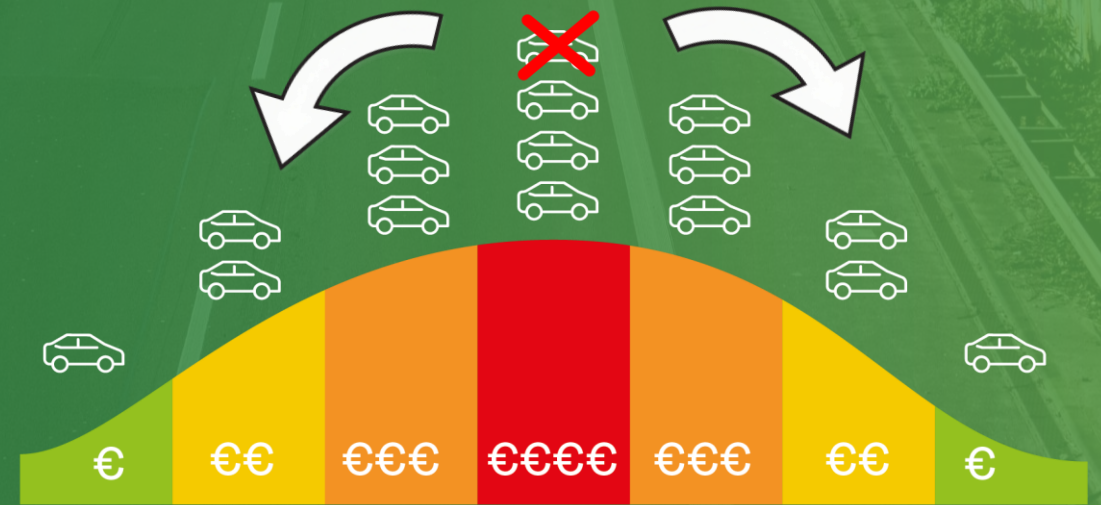
E-Mobility and H2 infrastructure

- Six H2-Fuelling Stations along the corridor by A22
- Three more in South Tyrol by Sasa and Alperia
- Megawatt-Charger – made in South Tyrol roll-out along the corridor by A22
- Energy storage strategy for optimal utilisation of energy



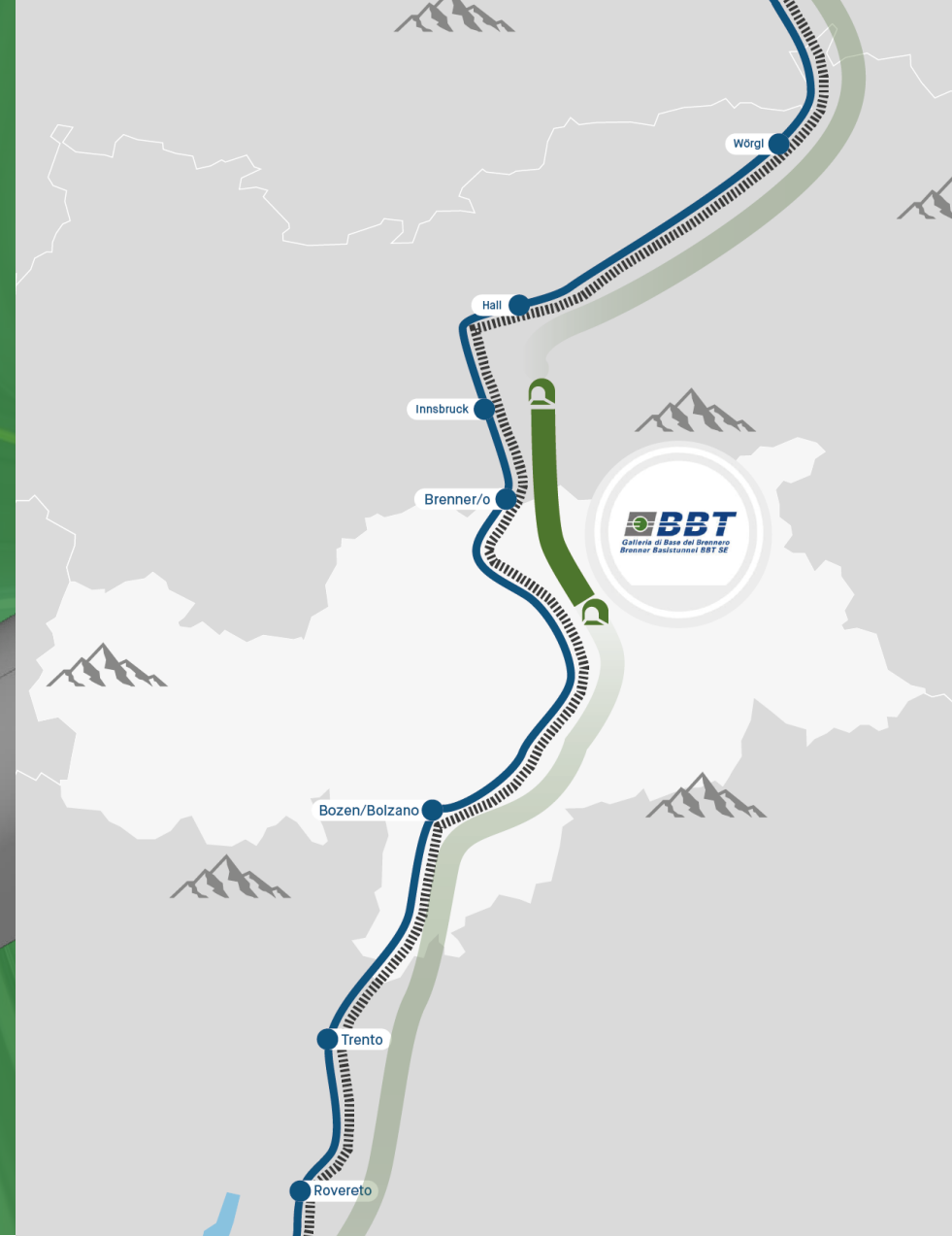
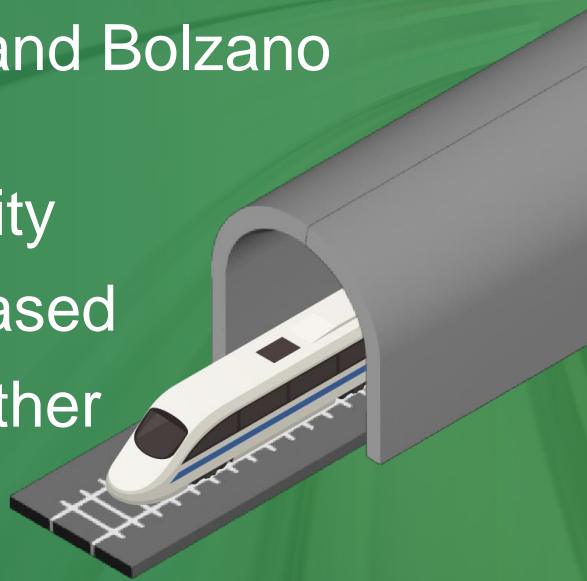
The toll as steering tool for the Brenner corridor

- Toll exemption or reduction for zero-emission HGV
- Variable toll system to steer traffic



The Brenner Base Tunnel – Gamechanger for the accessibility of South Tyrol

- Travel time between Munich and Bolzano halved
- Milestone for European mobility
- Rail capacity massively increased
- Regional rail traffic can be further expanded



The railway as backbone of the public transport

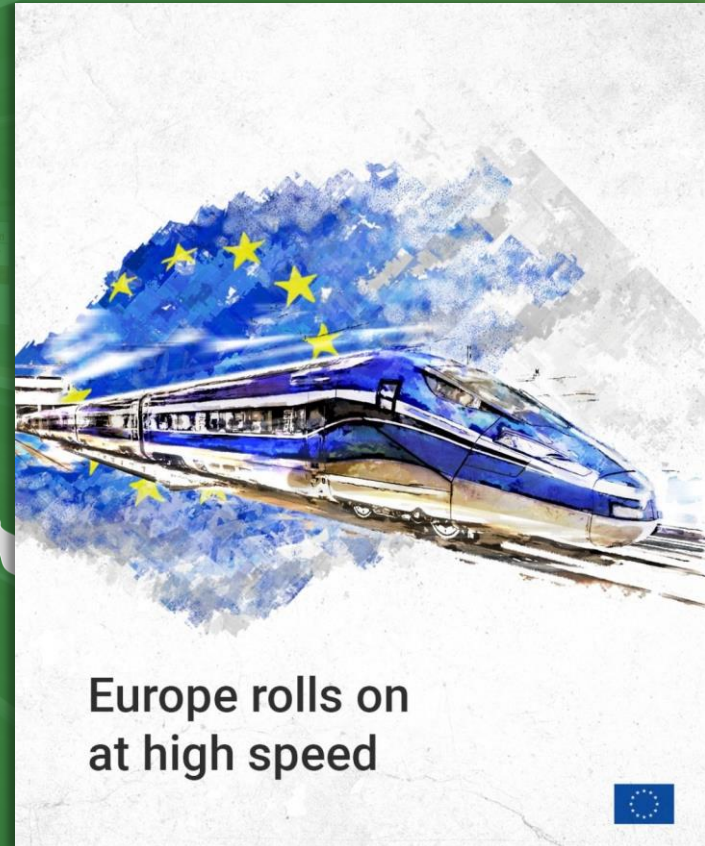
- Modern, interoperable and barrier-free trains, good connections from east to west and north to south with a good frequency
- Cross-border train connections are still a challenge in the EU today
- Europe needs more rail, but rail also needs more Europe!!



- An interoperable train for the Brenner corridor:
- AT: 15 kV
 - ITA/EU (high speed): 25 kV
 - ITA (conventional): 3 kV

... and as mode of transport of choice for long haul travel

- Quantitative and qualitative expansion of long-distance connections and network
- EU pilot project: high speed trains between Rome/Milan and Munich



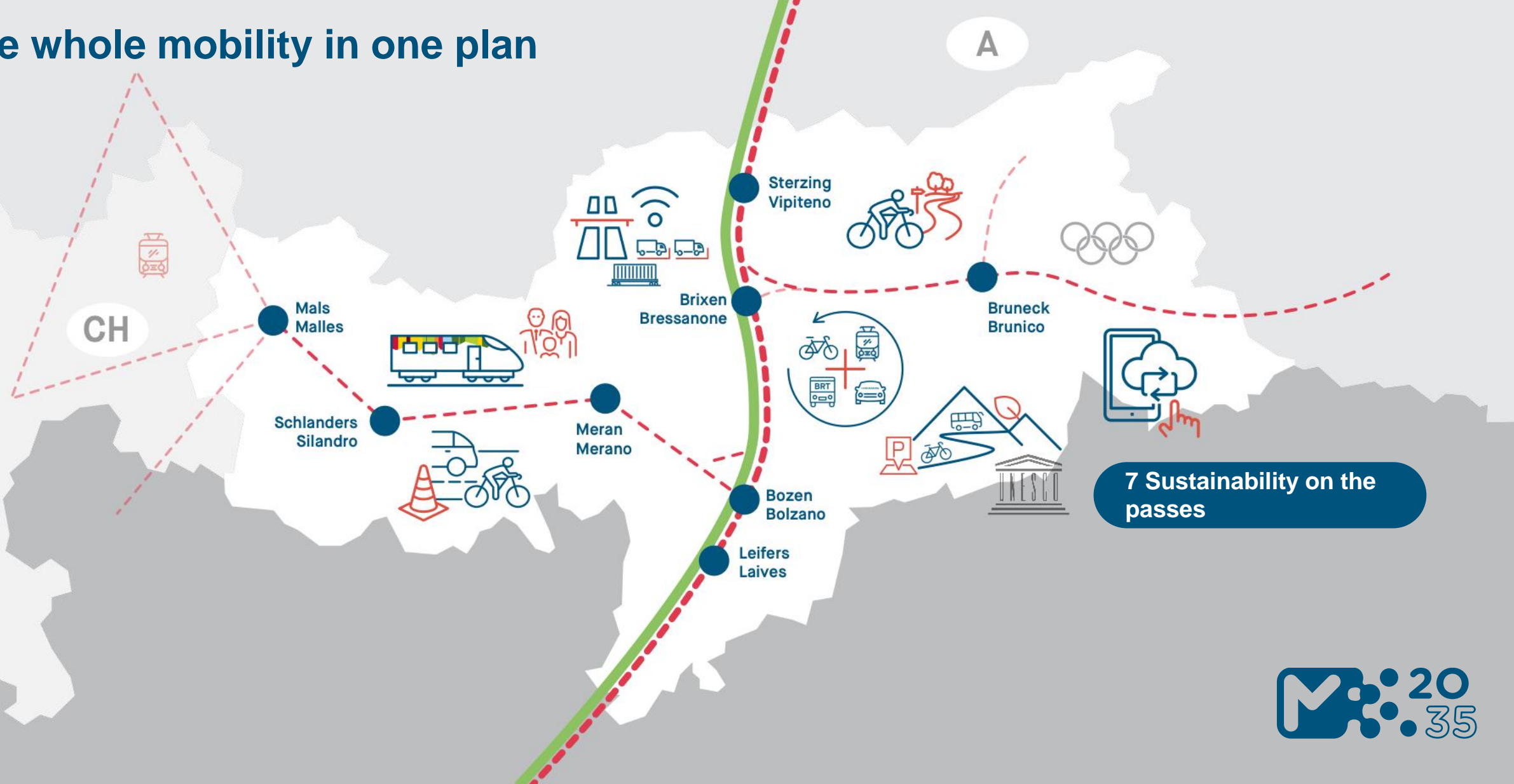
The whole mobility in one plan



Resilience of infrastructures in the face of climate change



The whole mobility in one plan



Situation on the passes

- Dense traffic in peak season
- Emissions (Noise und Pollutants)
- Violations of Traffic regulations (speeding, illegal parking, etc.)
- Wild camping
- Protest of Residents



Experience sensitive areas gently



Experience sensitive areas gently



Park&Ride



464

Ju de Börz
Würzjoch
passo delle Erbe



Fahrplan
Orario
Timetable



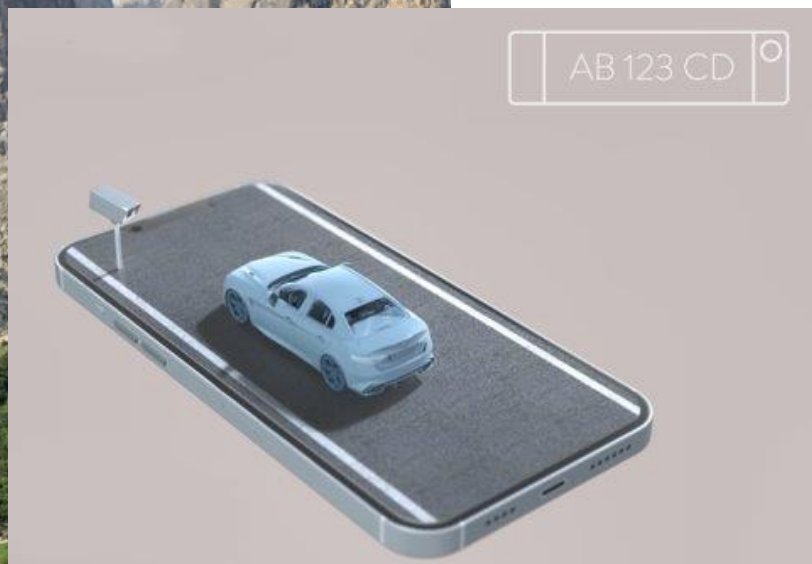
Parkplatz Würzjoch kostenpflichtig.
Begrenzte Stellplätze.

Parcheggio passo delle Erbe a
pagamento. Numero limitato di posti.

Würzjoch | passo delle Erbe parking
chargeable. Limited parking spaces.



Measures to reduce environmental pressure on valleys and vulnerable areas

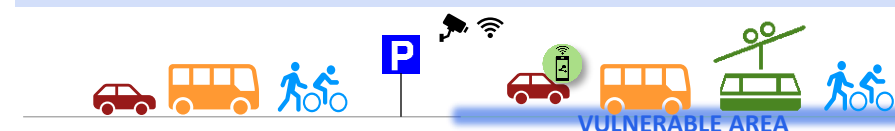


Tailor-made solutions for limiting access to valleys, passes and points of interest

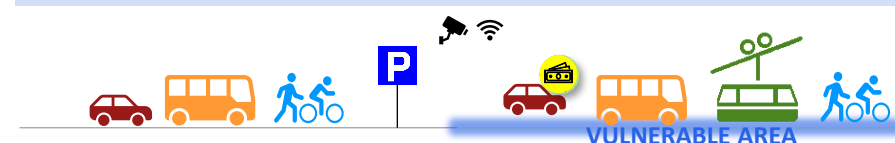
1. Access severely restricted to private vehicles



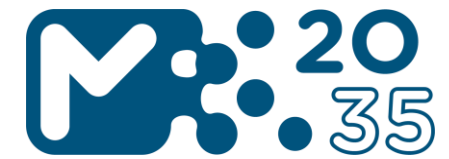
2. Limited and selective access to private vehicles



3. Access regulation through road pricing



Experience sensitive areas gently





#SüdtirolPlan - #AltoadigePlan

Our roadmap for the mobility of tomorrow

Thank you for your attention!

Michael Andergassen
Special Advisor for Mobility Planning
michael.andergassen@provinz.bz.it
Tel. +39 0471 41 25 77

AUTONOME PROVINZ
BOZEN - SÜDTIROL



PROVINCIA AUTONOMA
DI BOLZANO - ALTO ADIGE

PROVINCIA AUTONOMA DE BULSAN - SÜDTIROL

